



By Sherrie Smith

It's all about the chocolate chip cookies.

While in Nigeria, my Facebook status let everyone know I was in Nigeria. Facebook is the social networking computer thing where people can find out what you are doing and make comments. Being in Nigeria was a pretty big deal to me, but only a few people made a few little comments.

Back home, I announced to the world of Facebook that I had baked chocolate chip cookies. People reacted to that – many with requests for cookies. Even my Lutheran Bible Translator friends in Nigeria wanted me to send cookies. The bottom line is that people had no idea what to say about me being in Nigeria, but they could relate to the chocolate chip cookies.



This observation gave me a new insight into our world of LWML. We must begin with things our women can relate to. It is important when planning an event to make it relevant to our women's lives.

How about a cookie-baking event? Bake for college kids or shut ins. A Christmas cookie exchange is certainly a good way to

get a variety of cookies. Of course, prayer and the Word of God can be an ingredient to any of these events. It is all about the chocolate chip cookies.

And those chocolate chip cookies can be relationship-building tools. I remember baking with my mom and now my daughters bake with me. Maybe there are young women in your church that would love to learn to bake from you. What sweet memories can be made in the kitchen.

Chocolate chip cookies can share the sweet fragrance of the love of God. It's all about sharing God's love with His people.

Sherrie Shares



Sherrie Smith,
NID LWML
District
President

It is Good?

by Rev. Erik Gauss

Recently, I was shown an observation in the creation account of The Bible. Each day God speaks into existence a part of creation and saw that “it was good.” Well, after he makes Adam he looks and sees “It is not good” (Gen 2:18), ladies please control your giggling. This statement by God is a tremendous indication of the importance of relationship in His world. God goes on to find a suitable partner to “help each other up” (Eccl. 4:10), without relationships everything in this world is “meaningless” (Eccl 4:8)

Our Biennium mite goal is 1.8 million dollars, but this is only 25% of the total \$7.5 million that will be collected nation wide. Add our partners world wide and we are over \$10 million dollars. All this money is “meaning less” to use God’s language “it is not good” without relationships. I’m not talking about relationships with other believers, I’m not talking about the bible studies and the “kitchen conversation” this it the women’s MISSIONARY league. I’m talking about relationships with people who don’t know Christ. These are relational “mites” that are deposited in an unbeliever’s relational “mite box.”

Paul says it like this in 1 Corinthians 13, “If I give all I possess to the poor and surrender my body to the flames, but have not love, I gain nothing.” As you place your mites into your boxes this month, consider what it “mite” look like to invest your relational mites in a friendship with an unbeliever in your life.



Please share with the NID LWML your ideas for a Spring Event.

What did you do that worked ... or didn't work, speakers you enjoyed, themes, programs, games, resources, etc. Anything that might help inspire or help others in planning their Spring Event. We'll post some of these ideas (as space allows) in the next issue of NIDBits.

Send your ideas to LWMLgirl@comcast.net

My LWML Story

Stories of how women came into the LWML.

*This story by
Kirsten Smith (center)*

“Kirsten you will be my page for the LWML convention!” I smiled not knowing what that meant. I have been going to LWML events my whole life, but being the daughter of the Northern Illinois LWML president was new. All of the sudden I was filing papers, addressing letters, and being a page. My mom said that all I had to do is pass her notes and look cute. I thought, I can do that, plus she promised me a new dress. But as the convention day got closer I started to learn more about my page duties, I had to carry a banner and introduce my mom. So on convention day I put



on my new dress, grabbed my notes to introduce my mother, and headed over to Drury Lane. I passed things out for my mom and met the ladies serving with her, and all of them started showing

me the ropes of how the convention will go. So at the starting of the convention I carried a banner and took my seat as the president's page. When it became time to introduce my mom, I stepped up to the podium, took a deep breath, and began my introduction. I was so nervous, but everyone said I did a good job. After that I was a lot more relaxed and the time flew by. I learned much about LWML that day, but there is still more to learn and I learn more with each event I go to.



From a Life of Poverty . . .

*a story acquired by Kris Blackwell,
Vice President for Gospel Outreach*

Nokuthula Dlamini's story would be quite different if not for the scholarship program that allowed her to attend the Themba Boarding Schools.

Themba is based in Dirkiesdorp, the neighbouring community of Driefontein, where she was born.

Nokuthula is the fourth child in a family of six children. In addition to these kids, there are three more half-siblings, with whom they share a father. Nokuthula's mother passed away when she was five years old. Her maternal grandmother took the children in. They grew up in the farm area of Luenburg, the settlement of German-speaking farmers who are descendants of Lutheran



Mites that Matter
Stories about how your mites make a difference.

. . . to a Life of Potential

missionaries. Nokuthula's father works in Johannesburg as a carpenter, and only sees his children on the Easter and Christmas holidays. He has remarried, and it is not easy for the children to get along with their stepmother, who is reserved towards them. Their maternal grandmother still lives with them and plays a mothering role to them. The granny also helps to partly pay for Nokuthula's school fees from her government pension money.

Nokuthula's older three siblings are out of school. One brother is working at a small shop as a cashier, the other is doing seasonal work on the farms and her older sister completed her high-school education last year at Themba and is now in the city of Johannesburg trying to

further her studies with the money that their father earns through his carpentry work.

God worked the sad circumstances in Nokuthula’s life into an opportunity to attend Themba. Her grandmother had heard about Themba from friends. She was impressed by the excellence of the school, and also by the well behaved children that the school produces. So, after the great success of an older sister attending Themba, the grandmother, scholarship was applied for to help Nokuthula. Nokuthula enjoys studying and being at Themba, and can now speak English very well. She wishes school would be open all year long! She has grown to understand the statement of her older sister who used to say ‘Themba is a home away from home’. She feels like a visitor when she returns home to the farm for the holidays. But over Christmas, she is excited to be with her dad and other family members who come “back home” from the places they live.

Nokuthula is a very down to earth person who

God worked
the sad
circumstances
in Nokuthula’s
life into an
opportunity to
attend
Themba.

laughs a lot. She enjoys being with her friends most of the time. She loves playing Netball as part of having fun and relaxation. She loves her father, although he is hardly around, but she knows that the reason why he is away from home is because his work helps to feed, clothe and educate all of them. Nokuthula’s sincere wish is to finish school with excellent Matric results so that she may obtain a scholarship to further her studies. She dreams of building a big house so that her whole family can live together one day and also wants to help her elder siblings to support the two youngest kids in the family.

Note: The NIDLWML grant for Themba is #9 in the year 08-10 in the Mites Update below.

Mites Update 10/6/09

<i>Grant Year</i>	<i>Grant #</i>	<i>Description</i>	<i>Amount</i>	<i>Paid</i>	<i>Balance</i>
06-08	12	Arabic Ministry - Dr. Naeem	10,000.00	\$10,000.00	-
06-08	13	DuPage Asian Indian - CAME	10,000.00	516.18	9,483.82
06-08	15	New Cong - Salta, Argentina	7,393.00	7,393.00	-
08-10	1	Concordia Seminary St Louis Food Bank	12,000.00	12,000.00	-
08-10	2	Lutheran Orphanage in Jeremie, Haiti	12,000.00	3,967.05	8,032.95
08-10	3	Muslim Outreach and Church Planting - Chicago	12,000.00		12,000.00
08-10	4	Disaster Response Trailer	12,000.00	498.45	11,501.55
08-10	5	Lutheran Special Education in NID	10,000.00	\$7,572.64	2,427.36
08-10	6	African Immigrant Ministry in NID	12,000.00	5,585.97	6,414.03
08-10	7	Extra Mile Crisis Response Ministry	12,000.00		12,000.00
08-10	8	Cambodia-Battambang School and Outreach	10,750.00	6,541.13	4,208.87
08-10	9	Academic Textbooks/Supplies for Themba Girls	2,192.00		2,192.00

Did You Miss the Fall Gathering?

by Jewel T. Sims,
Convention Chairman

Jewel T. Sims and Dottie Hildebrant greeted over 140 women on Saturday October 17, 2009 for the NID LWML Fall Gathering at Trinity Lutheran Church Family Center.

Pastor Robert Bartz commissioned two members of the MOST Ministry Team leaving for Mexico before he began his bible study. The theme was Your Identity.... Whose You Are..and Who You Are. The Holy Spirit leads us to discover our uniqueness as an individual and our purpose in the body of Christ. Finding our identity is not a quick fix. Grace and human behavior are not always predictable. (1Corinthian 1:23..2:2, Philippians 3:8-10, 2Corinthian 7:9-11 and Hebrews 12:4-13) Pastor Bartz is now senior NID LWML counselor. He is pastor of Immanuel Lutheran Church in Richton Park and has agreed to finish the term of Pastor Kris who was recently elected the National LWML counselor at the 2009 Convention in Portland. Pastor Bartz was a candidate at NID 2008 Convention. His vision of LWML is "To encourage daily growing in grace and the knowledge of God, Father and Holy Spirit."

Kathie Teske accompanied us on the piano for our praise music.

Dawn Shalow was our dynamic inspirational speaker. She presented a two part-session based on Zestful Living - Psalm 100:1-2- "Shout for Joy to the Lord" and Romans 12:11-13 "One should never be lacking in zest, keep spiritual" Her points were:

1. Find joy..let it find you
- 2.Cultivate your prayer life
3. Seek forgiveness and give it
- 4.Build a deeper and more intimate relationship with God
- 5.Tell your story! Share His story.

She shared personal experi-

ences as they related to being joyful in hopefulness, affliction with patience and prayer faithfully. One of the first steps on the road to salvation is learning to accept and finding humor in our mistakes. When we are in touch with our own spiritual flaws and shortcomings we truly open ourselves to the saving power of Christ.

ZEST is the energizing of faith. We have many barriers to being zestful believers. Dawn's message was warmly received by all.

Meet and greet activity was enjoyed by all. The gathered women were able to introduce themselves, their church and share a "Shout for Joy" bible verse.

First-timers were acknowledged and given mite boxes and everyone was reminded to use theirs. As we closed the Spirit was felt in the Center as pledged and sang "Lutheran Women One and All".

NID LWML Calendar

November 21 EC meeting 9:00 at NID Office, Hillside - Elected Officers

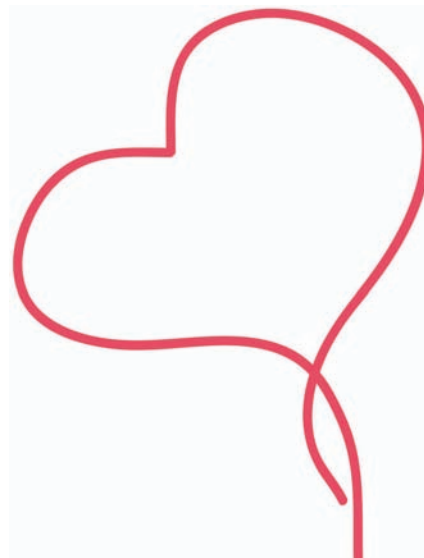
Saturday, February 20, 2010 EC meeting 9:30 at Trinity, Lisle.

February 20 Board of Directors - Elected Officers and Appointed Staff

March 6, 2010 Lenten Inspiration at Bethel, Gurnee.

March 13, 2010 Lenten Inspiration at Zion, Beecher.

Saturday October 23, 2010
NID LWML Convention
at St. Paul, Mt. Prospect.
"The King Reigns Triumphant."



LWML News Releases

PowerPak for LWML Mission Grants Now Available

Information on the mission grants adopted at the 2009 LWML Convention in Portland is now ready for sharing through the latest edition of the PowerPak, a free downloadable resource. This special collection of 19 distinctive 8 1/2 by 11 inch posters features attractive photos, along with a prayer, for each of the mission grants for the 2009-2011 biennium. PowerPak is offered to encourage support and commitment to the work that will be accomplished through the funding of each of these LWML supported grants that are a part of the 2009-2011 biennium Mission goal of \$1,825, 000.

Flooding in Georgia Brings Response from LWML

Recent flooding in Georgia has prompted LWML members to send monetary donations to assist those affected by the disaster. Donations may be made directly to the LWML Disaster Relief Fund through the Web site www.lwml.org. Click on the Giving link on the left side of the home page and follow the directions for making a donation. Under Donation Type scroll down and select Disaster Relief Fund. Donations also can be made by calling the LWML Office at 1.800.252.LWML (5965) or by mail to: LWML, P.O. Box 411993; St. Louis MO 63141-1993

2010 Pocket Diary Available from LWML

Just in time for fall Lutheran Women in Mission gatherings and holiday stocking stuffers, the 2010 LWML Pocket Diary is now available by contacting the LWML office at 800.253.LWML (5965) or through the Web site at www.lwml.org

LWML President Janice Wendorf Brings Greetings to Int'l LLL Convention

Welcomed on Friday, July 17 by the over 700 attendees at the 92nd Convention of the International Lutheran Laymen's League, Janice Wendorf, LWML President, brought greetings from the members of the other official auxiliary of the Lutheran Church—Missouri Synod, the Lutheran Women's Missionary League.

Explaining the new LWML Mission Goal of \$1.825 million that was adopted for the 2009-2011 biennium, President Wendorf noted that 70% of the amount, plus a \$57,482 overage from the last biennium, will be given to 19 mission grant recipients for a total of \$1,334,982. "We have the opportunity to see God accomplish great things in support of mission grants at home and in foreign countries. To Him be the glory!"

LWML news releases are archived at www.lwml.org under News link

**Send all monies for Mites, Quarterlies, Memorials
and other donations to the**

NID/FINANCIAL SECRETARY AT PO BOX 4254, NAPERVILLE, IL 60567

Use the forms, completely filled out, which are available from the Financial Secretary.

Place
stamp
here

***PRESIDENT: SHERRIE SMITH,** (708) 594-7442, bsmith0708@sbcglobal.net; Leads district in living out the mission of Lutheran Women in Mission. Will help with any questions you have about LWML.

***V.P. for SERVANT RESOURCES: GENE MILLER,** (708) 331-5075, gjm1953@aol.com; Assists societies in leadership and member development. Has servant resource items shown in LWML catalog.

V.P. for CHRISTIAN LIFE: ELVERARUFF, (630) 904-0310, eruff6311@aol.com; Provides mite boxes to zone presidents. Assists societies with Christian growth resources. Has items for Christian life from LWML catalog. Plans retreats. Prepares Speakers List.

V.P. for HUMAN CARE: CAROL FUYS, (630) 637-0550, cfuys14@comcast.net; Coordinates servant events and in-gatherings. Provides information on service projects and events.

V.P. for GOSPEL OUTREACH: KRIS BLACKWELL, (630) 234-1491, kbwrk@sbcglobal.net; Encourages development of mission grant proposals. Presents reviewed projects to the Executive Committee and the convention for selection.

V.P. for COMMUNICATION: NANCY GLISSMAN, (630) 715-4351, lwmlgir@comcast.net; Coordinator of all district LWML publications, print and electronic.

TREASURER: DONNA SIMUNDIC, PO Box 693, Westmont, IL 60559-0693, (630) 241-2625, simundic@juno.com; Makes all authorized payments.

FINANCIAL SECRETARY: BARBARA ETTER, PO Box 4254, Naperville, IL 60567, (630) 420-0626, barbetter@comcast.net; Receives all mites, special donations, Quarterly donations and memorials.

RECORDING SECRETARY: ELIZABETH BERTELS, (630) 833-6050, ebterts@d15.us; Records and distributes minutes from EC & BOD meetings, and convention.

***CORRESPONDING SECRETARY: CHARLOTTE LARSON,** (815) 206-0730, eccleeneedle2@juno.com; Receives changes of addresses, changes in the amounts of

Quarterlies, handles correspondence and loaning of LWML videos.

CONVENTION CHAIRMAN: JEWEL T. SIMS, (773) 277-2690, Jsgrand5@aol.com; Coordinates district gatherings and convention.

NOMINATING COMMITTEE CHAIRMAN: JANET MAUER, (708) 798-0691, janmauer@sbcglobal.net; Receives nominations for NID LWML officers for elections.

***ARCHIVIST-HISTORIAN: RUTH PRALLE,** (847) 255-1713, rdpralle@yahoo.com; Preserves historical materials from district and zones.

SR. PASTORAL COUNSELOR: REV. ERIK GAUSS, Egauss@hiscross.org; Serves district league in advisory capacity and presents Bible studies at meetings and conventions.

JR. PASTORAL COUNSELOR: REV. ROBERT BARTZ revrob8@sbcglobal.net Serves district league in advisory capacity and presents Bible studies at meetings and conventions

STRUCTURE CHAIRMAN: NANCY SUHS, (708) 799-4872, carlnansuhs@aol.com; Prepares and presents bylaws for delegate approval at convention. Receives all bylaws and constitutions from societies and zones.

PARLIAMENTARIANS:

DORCAS MEISSNER, (847) 854-5761, bwdmmeissner@sbcglobal.net; and
CARLI ZYGOWICZ, (815) 547-8639, czygowicz@hotmail.com; Assists president with parliamentary procedures at all meetings and the convention.

*PUBLIC RELATIONS CO-DIRECTORS:

BARBARA COPELAND-BELANSKI, (708) 995-5375, mokenaliving@comcast.net; and
CAROL SHEPPARD, (773) 881-8126, sheppardnurse@att.net; Coordinates PR activities for district LWML.

DISTRICT PUBLICATION EDITOR: TRACY RADATZ, (630) 834-8523, nidlwml-editor@aol.com; Produces the monthly LWML page in The Northern Light. Send her LWML events you want publicized.

NID-BITS EDITOR: TEENA DORN, (708) 957-4491, teenadorn@aol.com; Produces the NID-Bits insert for The Quarterly.

DISTRICT WEBMASTER: WENDY JOHNSON, (815) 874-2304, nidlwmlpr@msn.com; Posts information on the district web page, www.nidlwml.org.

PLANNER: JAN STANTUS, (630) 208-7353, jstan1@juno.com; Serves as planning director for NID LWML.

MISSION MINISTRY VISION CONSULTANTS:

PAULINE BRUNKE, (630) 393-6380, psbrunke@yahoo.com; and
DARLYNE WATTS, (815) 762-0546, darlynelark@aol.com; Assists zones and societies with visioning and overcoming obstacles to become more effective in living out the LWML mission.

SHORT TERM MISSION COMMITTEE: JAN GERZEVSKE, (630) 294-5014, jgerz@netzero.com; Encourages awareness and provides opportunities for participation in short term missions.

COMMITTEE ON YOUNG WOMEN CHAIRMAN: vacant, Assists zones and societies as they seek to meet the needs of young women.

*Send copies of Zone minutes to these officers.